

RIVERWALK CENTER II

RIVERWALK CENTER OFFICE SPACE
1673 SHORELINE DRIVE • BOISE

AVAILABLE FOR LEASE



FEATURES

OFFICE SPACE FOR LEASE

- **LEASE RATE:** \$19.75 SQ. FT. FLSV

AMENITIES INCLUDE:

- CLASS A OFFICE SPACE LOCATED NEAR DOWNTOWN
- EXCELLENT LOCATION DIRECTLY ADJACENT TO THE BOISE RIVER AND GREENBELT
- AMPLE PARKING FOR TENANTS, GUESTS AND STAFF
- EASY ACCESS TO THE CONNECTOR AND I-84

Rafanelli
& Nahas

FOR LEASING
INFORMATION

SCOTT SCHOENHERR



208.947.0407
208.631.7611 (cell)



scotts@rafnah.com



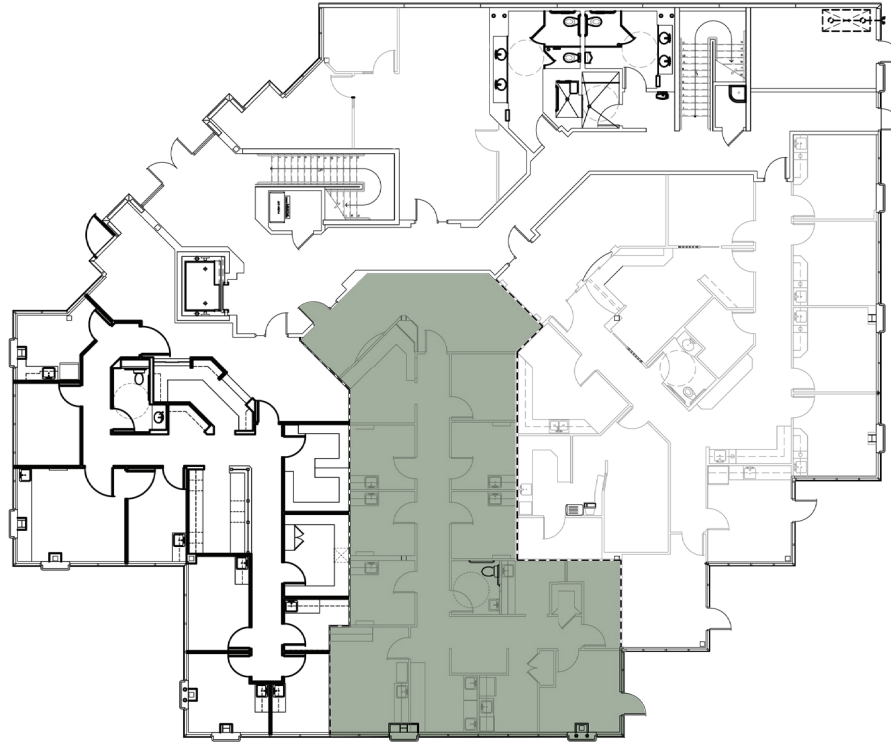
702 W. Idaho St.
Suite 825
Boise, ID 83702

FAX : 208.947.0411

RIVERWALK CENTER II

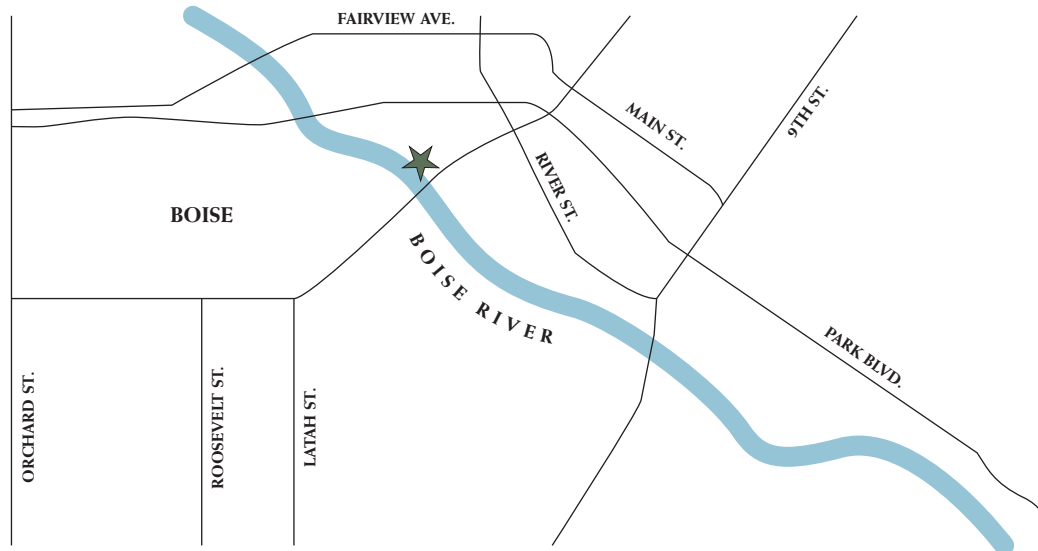
RIVERWALK CENTER OFFICE SPACE
1673 SHORELINE DRIVE • BOISE

FLOOR PLAN



1ST FLOOR
SUITE 120
2,361 SQ. FT.

LOCATION MAP



Rafanelli
& Nahas

FOR LEASING
INFORMATION

SCOTT SCHOENHERR

208.947.0407
208.631.7611 (cell)

scotts@rafnah.com

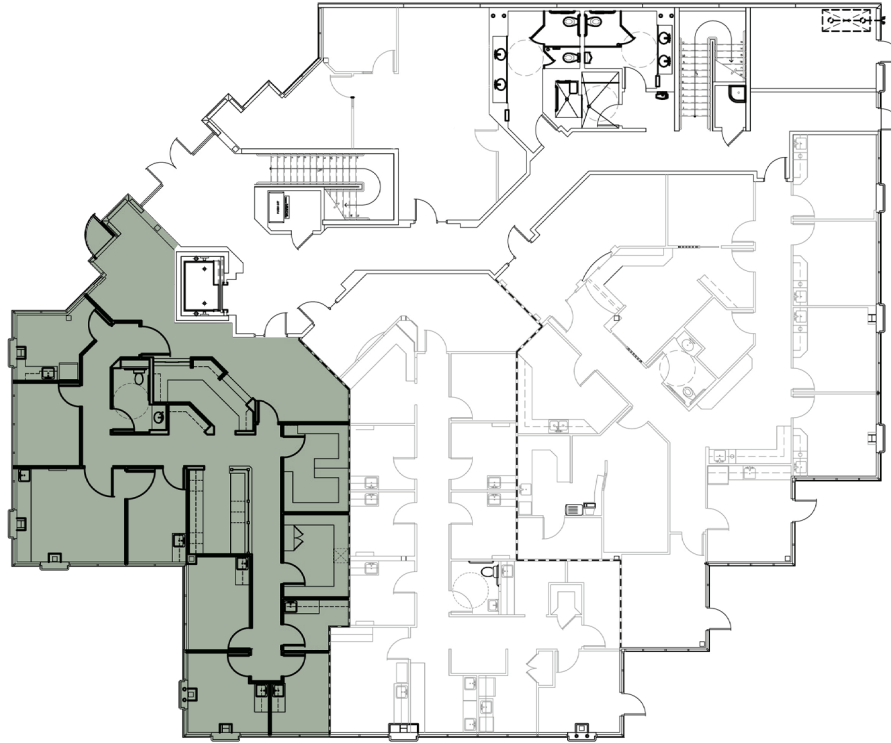
702 W. Idaho St.
Suite 825
Boise, ID 83702

FAX : 208.947.0411

RIVERWALK CENTER II

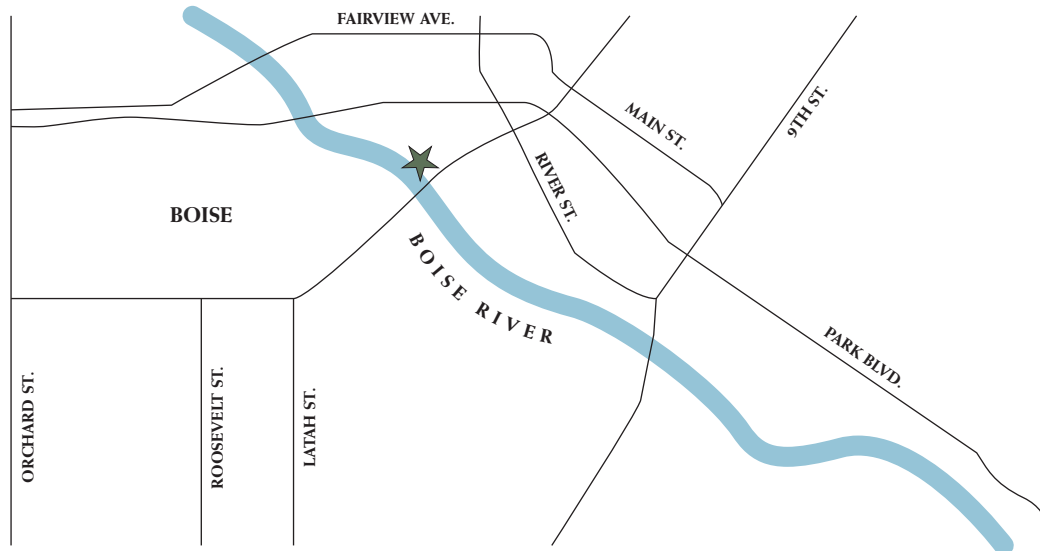
RIVERWALK CENTER OFFICE SPACE
1673 SHORELINE DRIVE • BOISE

FLOOR PLAN



1ST FLOOR
SUITE 140
2,678 SQ. FT.

LOCATION MAP



Rafanelli
& Nahas

FOR LEASING
INFORMATION

SCOTT SCHOENHERR

208.947.0407
208.631.7611 (cell)

scotts@rafnah.com

702 W. Idaho St.
Suite 825
Boise, ID 83702

FAX : 208.947.0411