

RIVER RUN CENTER

RIVER RUN CENTER OFFICE SPACE
EAST RIVERPARK LANE • BOISE



AVAILABLE FOR LEASE

FEATURES

Rafanelli
& Nahas

FOR LEASING
INFORMATION

SCOTT SCHOENHERR



208.947.0407
208.631.7611 (cell)



scotts@rafmah.com



702 W. Idaho St.
Suite 825
Boise, ID 83702

FAX : 208.947.0411

OFFICE SPACE FOR LEASE

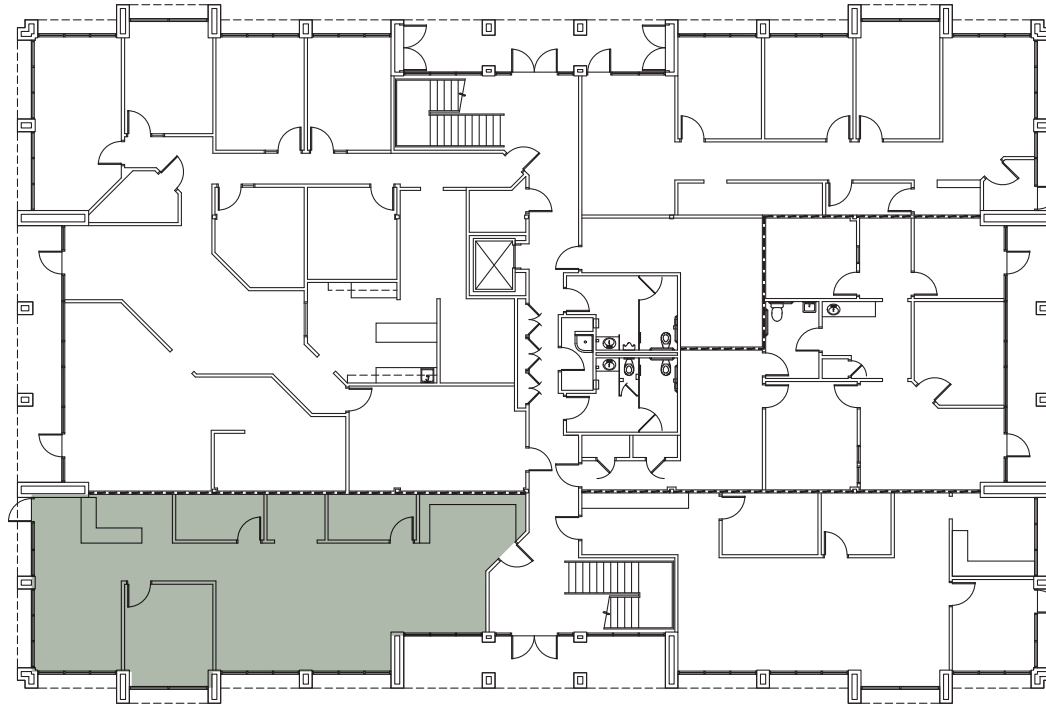
- **LEASE RATE:** \$18.00 SQ. FT. FLSV

- CLASS "A" OFFICE SPACE LOCATED ON PARKCENTER BOULEVARD IN BOISE
- SUITES CAN BE COMBINED IN A VARIETY OF WAYS TO SUIT ALMOST ANY SIZE USER
- LOCATED IN A NICELY DEVELOPED PROFESSIONAL OFFICE PARK WITH QUALITY LANDSCAPING
- AMPLE PARKING FOR TENANTS, STAFF & CLIENTS
- GREAT LOCATION FOR A TENANT LOOKING TO SERVICE BOISE AND ITS SURROUNDING AREAS
- SURROUNDED BY MEDICAL OFFICES, HOTELS, RETAILERS, RESTAURANTS AND OTHER SERVICES
- RIDE / WALK TO WORK, CLOSE PROXIMITY TO THE BOISE GREENBELT AND BOISE RIVER

RIVER RUN CENTER

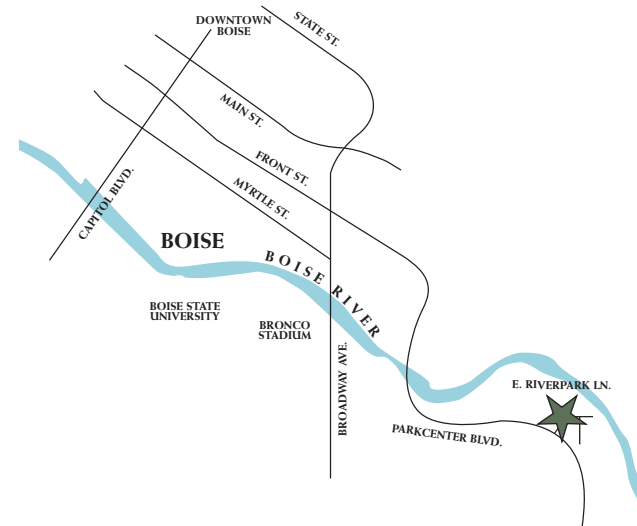
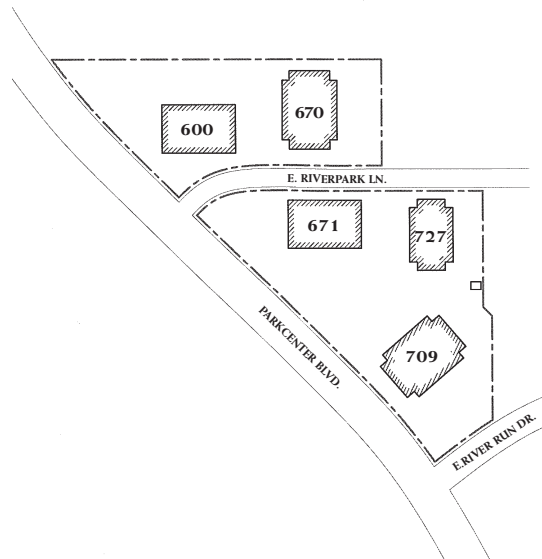
RIVER RUN CENTER OFFICE SPACE
EAST RIVERPARK LANE • BOISE

FLOOR PLAN



1ST FLOOR
BUILDING 600
SUITE 100
1,582 SQ. FT.

SITE PLAN



LOCATION MAP

Rafanelli
& Nahas

FOR LEASING
INFORMATION

SCOTT SCHOENHERR

208.947.0407
208.631.7611 (cell)

scott@srafnah.com

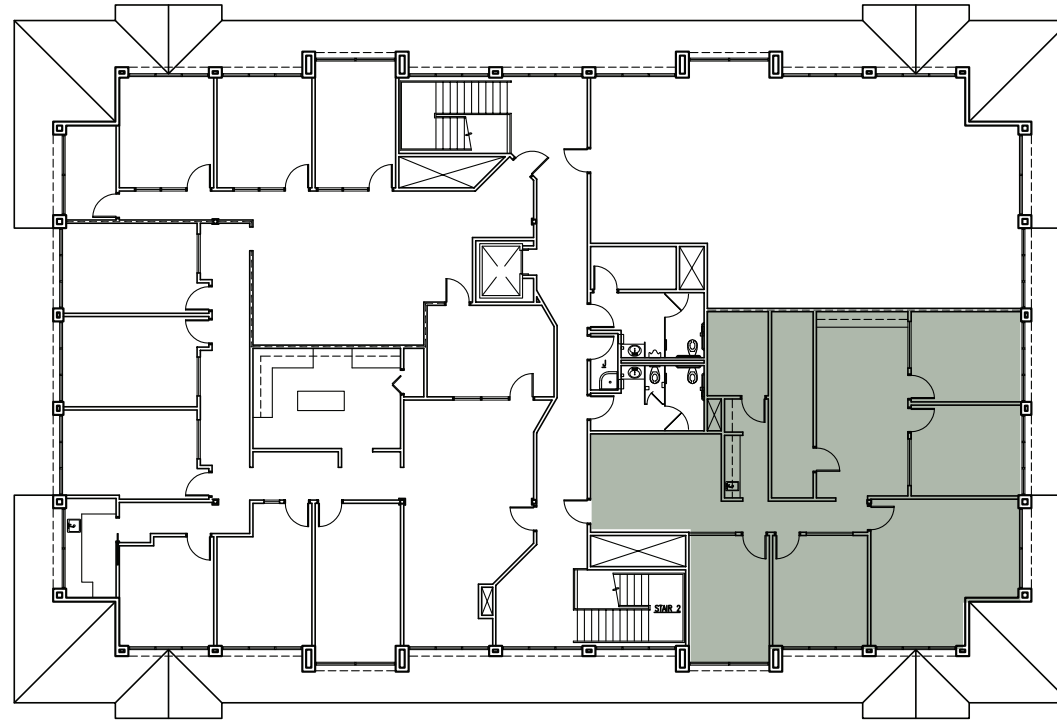
702 W. Idaho St.
Suite 825
Boise, ID 83702

FAX: 208.947.0411

RIVER RUN CENTER

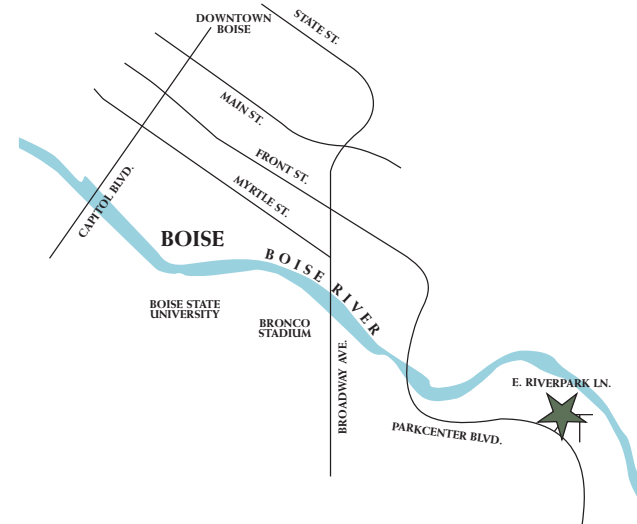
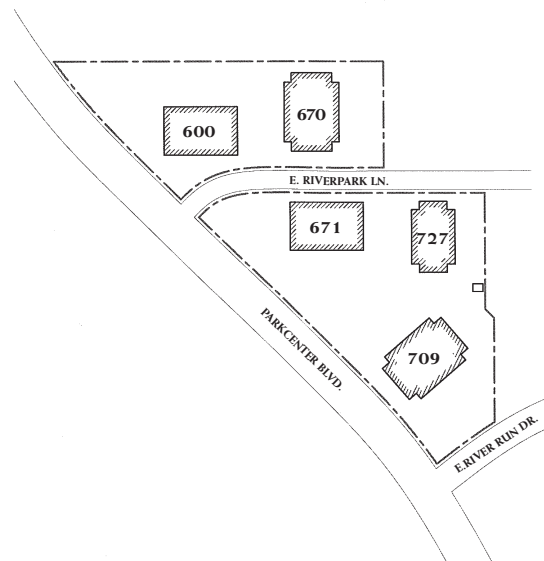
RIVER RUN CENTER OFFICE SPACE
EAST RIVERPARK LANE • BOISE

FLOOR PLAN



2ND FLOOR
BUILDING 600
SUITE 205
2,176 SQ. FT.

SITE PLAN



LOCATION MAP

Rafanelli
& Nahas

FOR LEASING
INFORMATION

SCOTT SCHOENHERR

208.947.0407
208.631.7611 (cell)

scotts@rafnah.com

702 W. Idaho St.
Suite 825
Boise, ID 83702

FAX: 208.947.0411